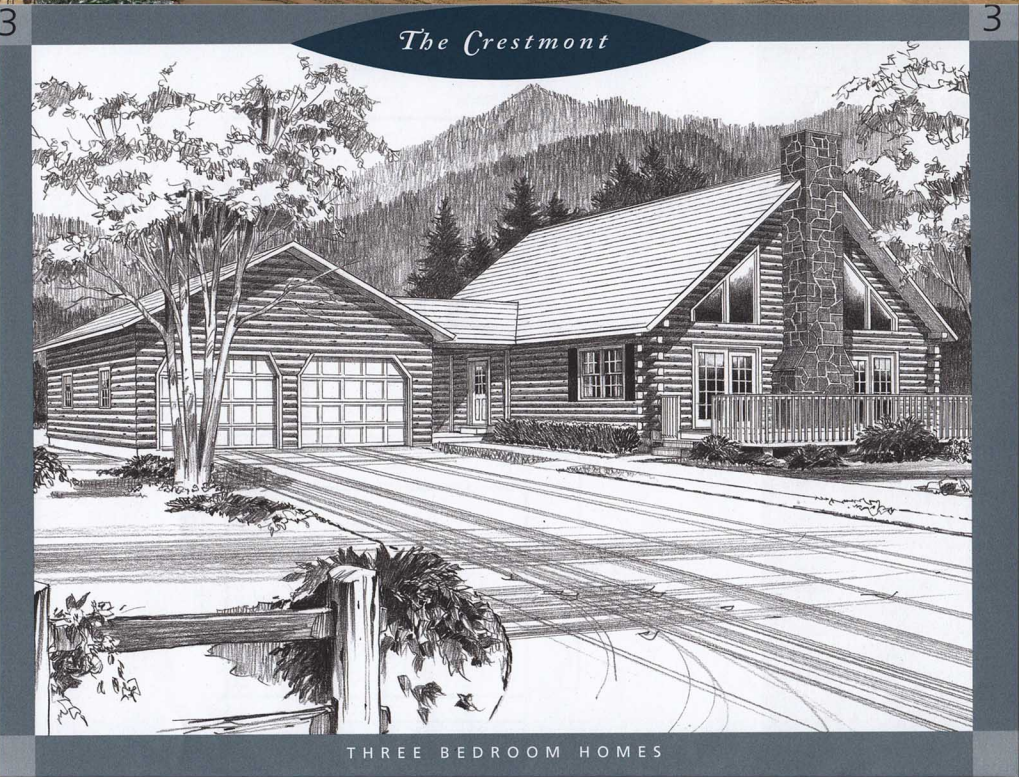




The Crestmont



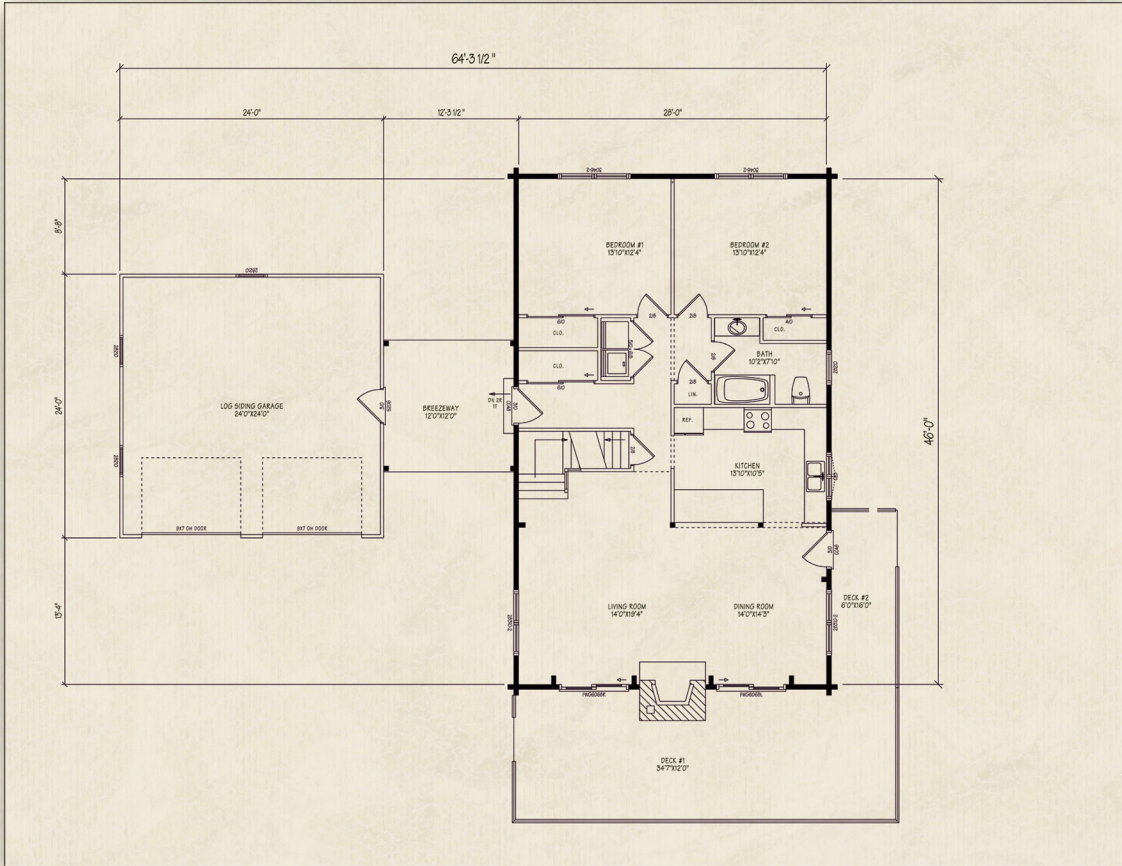
Northeastern Log Homes

info@northeasternlog.com 800-624-2797 www.northeasternlog.com

*Artist's rendering, photography and optional design ideas may vary from the standard model. Please always consult the standard floorplan and refer to the Premier Series material list as to what is included.



The Crestmont



Premier Home Series

28' x 46' Size

2,192 Square Feet

Three Bedrooms

Two Baths

Pricing information
available for download
on our website

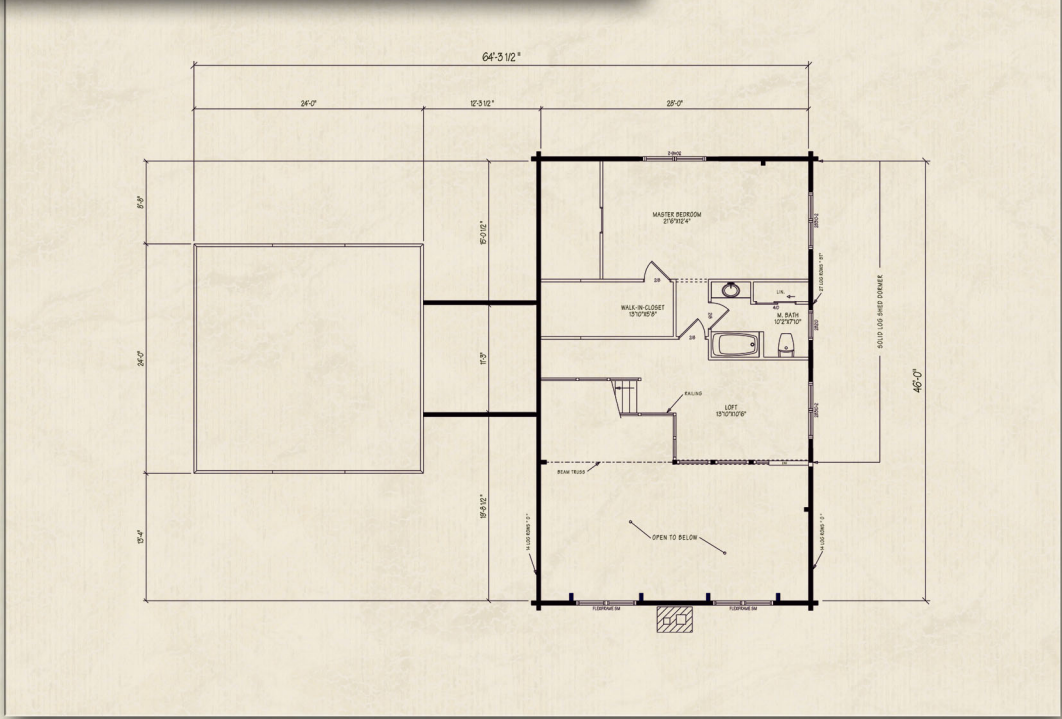
Optional Design Ideas:

Remove the partition wall between bedroom #1 and bedroom #2 to create a first-floor master bedroom suite. This can be planned to be done at a future time when kids are grown and out of the home (when 'first-floor' living becomes more attractive!)

Remove the breezeway connector and place a stunning porch along that side

Washer/Dryer can be moved to the basement area to create an amazing kitchen pantry

Add a slight overhang to the countertop and seating at the south end of the kitchen island to create a terrific gathering space and breakfast bar area



Northeastern Log Homes

info@northeasternlog.com 800-624-2797 www.northeasternlog.com

*Artist's rendering, photography & optional design ideas may vary from the standard model. Please always refer to the standard floorplan and consult the Premier Home Series Material List as to what is included. All plans, photography and images copyright NLH 2016

The Crestmont

